



**NAXSA**  
North American  
Excavator Shoring Association



# LINE CARD



## ALUMINUM SHIELDS

**2' TALL MOD PANELS C-60 DEPTH WEIGHT**

3' ALUMINUM MODULAR PANEL	50'	50
4' ALUMINUM MODULAR PANEL	42'	60
5' ALUMINUM MODULAR PANEL	29'	70
6' ALUMINUM MODULAR PANEL	28'	90
8' ALUMINUM MODULAR PANEL	21'	120
10' ALUMINUM MODULAR PANEL	17'	140
12' ALUMINUM MODULAR PANEL	14'	170

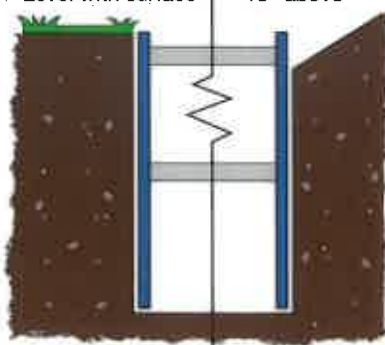


## HYDRAULIC SHORING

SHORE HEIGHT	CYLINDER SIZE	COLOR
1.5' SHORE	17"-27"	Yellow
3.5' SHORE	22"-36"	Red
4' SHORE With Fin Form	28"-46"	Green
5' SHORE	34"-55"	Blue
6' SHORE With Fin Form	40"-64"	Orange
7' SHORE	52"-88"	Black
8' SHORE With Fin Form	76"-112"	Brown
10' SHORE With Fin Form	94"-130"	Purple
12' SHORE With Fin Form	108"-114"	White
16' SHORE With Fin Form	124"-160"	Grey

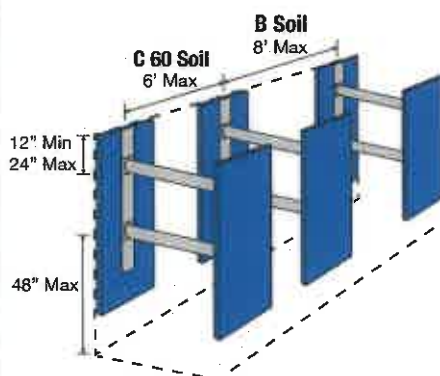
**FLAT GROUND**  
Level with surface

**SLOPING**  
18" above

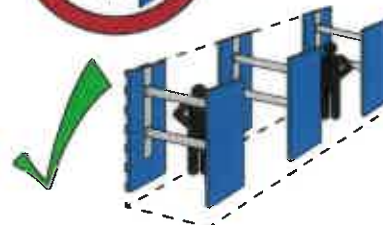


Alternating shores NOT required.

## SHORE SPACING



The use of one shore is never allowed. Shores must be used in a system.



## SHORE SPACING



Trench walls must be within 6" of shield walls to prevent lateral shifting.



Site specific engineering required.

## SOIL TYPES

**Type C**

**Type C-60 (Tab Data Only)**

**Type B**

Weak Clay, Round Gravel, Sand

Can be cut vertically, and will stand long enough to install worker protection. (refer to Tab data for exact definition)

Medium Stiff Clay, Angular Gravel, Silt

**Type C Sight Conditions**  
Submerged Soil (Freely Seeping)  
4 to 1 Sloped Layered Soil

← No red sight conditions

← No red sight conditions



9995 SW Avery St, Ste 210, Tualatin, OR 97062

(503) 855-4964 | info@falconshoring.com | www.falconshoring.com